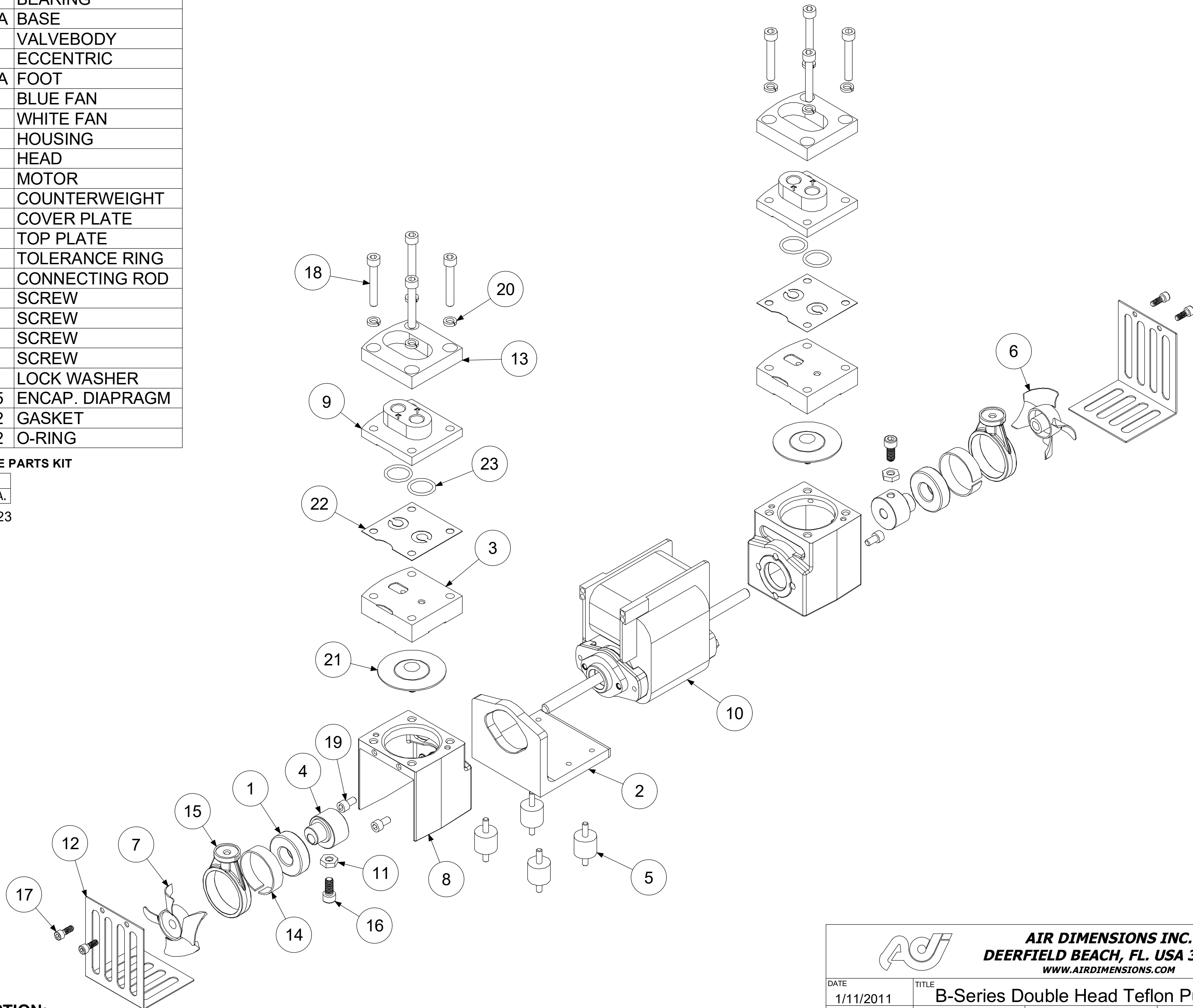


Parts List			
ITEM	QTY	PART #	DESCRIPTION
1	2	A02411	BEARING
2	1	A02441A	BASE
3	2	A02484	VALVEBODY
4	2	A05401	ECCENTRIC
5	4	A06401A	FOOT
6	1	A06443	BLUE FAN
7	1	A06444	WHITE FAN
8	2	A08461	HOUSING
9	2	A08484	HEAD
10	1	A13402	MOTOR
11	2	A14401	COUNTERWEIGHT
12	2	A16407	COVER PLATE
13	2	A16409	TOP PLATE
14	2	A18402	TOLERANCE RING
15	2	A18461	CONNECTING ROD
16	2	A19013	SCREW
17	4	A19021	SCREW
18	8	A19309	SCREW
19	4	A19419	SCREW
20	8	A23402	LOCK WASHER
21	2	*A04405	ENCAP. DIAPHRAGM
22	2	*A07482	GASKET
23	4	*A15402	O-RING

**\*RECOMMENDED SPARE PARTS KIT**


DIAPHRAGM KIT	
11418	ENCAPSULATED DIA.

INCLUDES ITEMS 21-23



**MOTOR DESCRIPTION:**  
A13402 1/22HP 110V 60Hz or 220V 50/60Hz 1Ph

08/21 (2197)

		<b>AIR DIMENSIONS INC.</b> <b>DEERFIELD BEACH, FL. USA 33442</b> <a href="http://WWW.AIRDIMENSIONS.COM">WWW.AIRDIMENSIONS.COM</a>	
DATE	1/11/2011	TITLE	B-Series Double Head Teflon Pump
APPROVED BY	FDM	DWG NO	Bxx2-TE-AC5
		MODEL #	Bxx2-TE-AC5
			SHEET 2 OF 2