

Parts List

ITEM	QTY	PART#	DESCRIPTION
1	1	A02411	BEARING
2	1	A02702B	BASE PLATE
3	1	A02703	BRACKET
4	1	A02705	VALVEBODY, 316ss
5	1	A03701	CAP
6	1	A03706	COVER
7	1	A05401	ECCENTRIC
8	4	A06401A	FOOT
9	1	A08702	HOUSING
10	1	A08703	HEAD, 316ss
11	1	A13406	MOTOR, 12V
12	1	A14401	COUNTERWEIGHT
13	1	A16701	PLATE, 316ss
14	1	A18402	TOLERANCE RING
15	1	A18701	CONROD
16	1	A19013	SCREW
17	2	A19418	SCREW
18	4	A19613	HEAD BOLT
19	1	A19707	PLATE SCREW, 316ss
20	8	A19718	SCREW
21	4	A19720	COVER SCREW
22	4	A23402	LOCK WASHER
23	1	*A04711	DIAPHRAGM, TEFLON
24	1	*A07701	GASKET, TEFLON
25	1	*A23461	WASHER
26	1	*A23701	WASHER

*RECOMMENDED SPARE PARTS KITS

DIAPHRAGM KITS	
11706	TEFLON/VITON
11711	2-PLY TEFLON

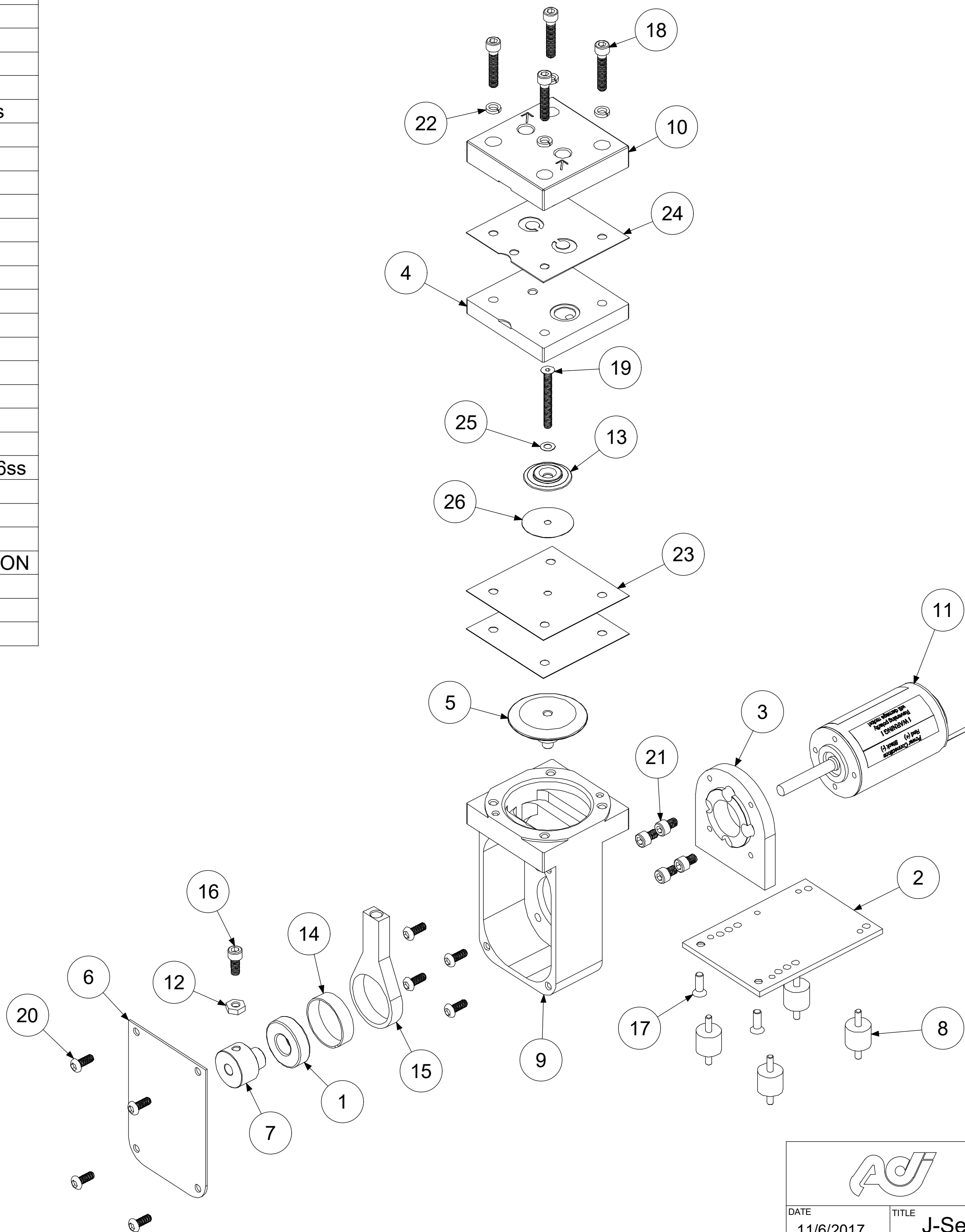
INCLUDES ITEMS 23-26

Notes:

1. To apply power to the motor, connect the red lead to the positive (+) power terminal. Connect the black lead to the negative (-) power terminal.

2. This motor is not reverse polarity protected. Reversing positive and negative polarity will damage the motor.

3. A 12.5 amp fuse is recommended to be used with the 12 volt motor. An 8 amp fuse is recommended to be used with the 24 volt motor.



ALTERNATE AND OPTIONAL PARTS

A02705	VALVEBODY - 316ss
A02706	VALVEBODY - ALUM
A02709	VALVEBODY - 316ss TEF CO
A02710	VALVEBODY - ALUM TEF CO
A02795	VALVEBODY - SILCONERT
A04709	DIAPHRAGM - TEFLON/VITON
A04711	DIAPHRAGM - 2-PLY TEFLON
A07701	GASKET - TEFLON
A07705	GASKET - VITON
A08703	HEAD - 316ss
A08704	HEAD - ALUM
A08707	HEAD - 316ss TEF CO
A08708	HEAD - ALUM TEF CO
A08793	HEAD - SILCONERT
A13406	MOTOR 12V DC
A13407	MOTOR 24V DC
A16701	PLATE - 316ss
A16705	PLATE - 316ss TEF CO
A16791	PLATE - SILCONERT
A19707	PLATE SCREW - 316ss
A19711	PLATE SCREW - 316ss TEF CO

ADC-163 06/12/20



AIR DIMENSIONS INC.
DEERFIELD BEACH, FL. USA 33442
WWW.AIRDIMENSIONS.COM

DATE	TITLE	
11/6/2017	J-Series Brushless DC Pump	
APPROVED BY	DWG NO	MODEL #
FDM	Jxx1-xx-Tx0	Jxx1-xx-Tx0

10/20 (2131)