

Parts List

ITEM	QTY	PART NUMBER	DESCRIPTION
1	1	A01311	ADAPTOR
2	1	A01331	ADAPTOR
3	1	A02005	VALVEBODY
4	1	A02310	BUSHING
5	2	A02311	BEARING
6	1	A02322	HOUSING
7	1	A03301	CAP
8	1	A03302	CWEIGHT
9	1	A03303	COVER
10	1	A03317	CAPACITOR
11	1	A04351	WIRING DIAGRAM
12	1	A05305	ECCENTRIC
13	1	A06310	FAN
14	1	A08003	HEAD
15	3	A09301	INSERT
16	1	A13311	Mini TENV
17	1	A16001	PLATE-DIAPH.
18	1	A18301	CONN. ROD
19	2	A18302	TOL. RING
20	6	A19013	SCREW
21	2	A19044	HI-TEMP SPACER
22	1	A19306	SCREW
23	1	A19307B	PLATE SCREW
24	1	A19308	SET SCREW
25	1	A19309	SCREW
26	4	A19317	SCREW
27	1	A19321	SCREEN
28	3	A19322	SCREW
29	3	A19326	SCREW
30	1	A19326A	SCREW
31	4	A19327	SCREW-COVER
32	1	A19345	MINI SPACER
33	2	A19467	PLATE SCREW, 316ss
34	4	A23302	WASHER
35	1	LAB-UL-A13310-1	LABEL UL
36	2	*A04004	DISC-VALVE
37	2	*A04312	DIAPHRAGM
38	1	*A07001	GASKET
39	1	*A23001	WASHER

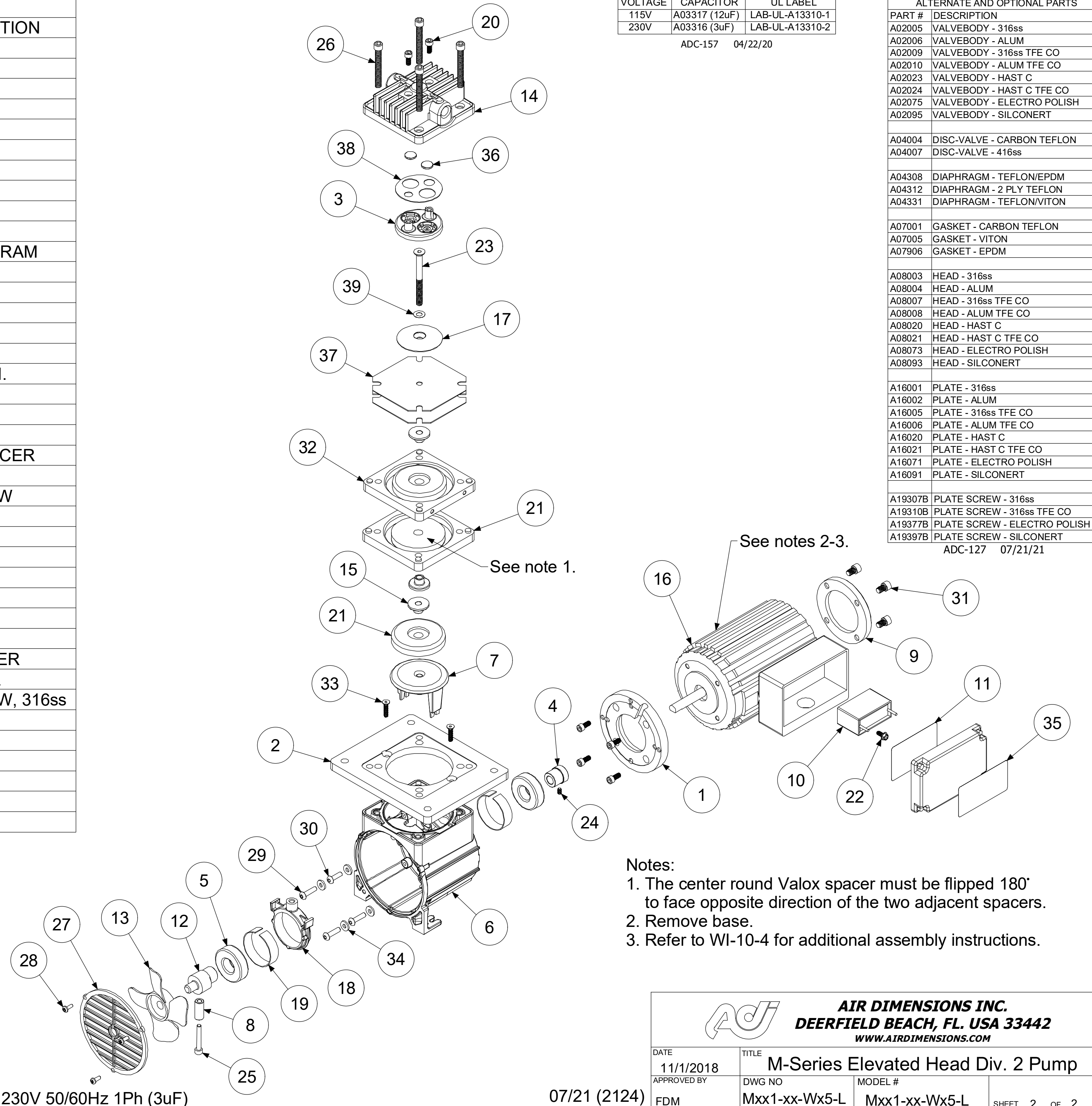
*RECOMMENDED SPARE PARTS KITS

DIAPHRAGMS KITS	
11310	2-PLY TEF/VITON
11312	2-PLY TEFLON
11313	TEFLON/EPDM

INCLUDES ITEMS 36-39

MOTOR DESCRIPTION:

A13311 1/20HP 115V 50/60Hz 1Ph (12uF) or 230V 50/60Hz 1Ph (3uF)



VOLTAGE	CAPACITOR	UL LABEL
115V	A03317 (12uF)	LAB-UL-A13310-1
230V	A03316 (3uF)	LAB-UL-A13310-2


ADC-157 04/22/20

ALTERNATE AND OPTIONAL PARTS	
PART #	DESCRIPTION
A02005	VALVEBODY - 316ss
A02006	VALVEBODY - ALUM
A02009	VALVEBODY - 316ss TFE CO
A02010	VALVEBODY - ALUM TFE CO
A02023	VALVEBODY - HAST C
A02024	VALVEBODY - HAST C TFE CO
A02075	VALVEBODY - ELECTRO POLISH
A02095	VALVEBODY - SILCONERT
A04004	DISC-VALVE - CARBON TEFLON
A04007	DISC-VALVE - 416ss
A04308	DIAPHRAGM - TEFLON/EPDM
A04312	DIAPHRAGM - 2 PLY TEFLON
A04331	DIAPHRAGM - TEFLON/VITON
A07001	GASKET - CARBON TEFLON
A07005	GASKET - VITON
A07906	GASKET - EPDM
A08003	HEAD - 316ss
A08004	HEAD - ALUM
A08007	HEAD - 316ss TFE CO
A08008	HEAD - ALUM TFE CO
A08020	HEAD - HAST C
A08021	HEAD - HAST C TFE CO
A08073	HEAD - ELECTRO POLISH
A08093	HEAD - SILCONERT
A16001	PLATE - 316ss
A16002	PLATE - ALUM
A16005	PLATE - 316ss TFE CO
A16006	PLATE - ALUM TFE CO
A16020	PLATE - HAST C
A16021	PLATE - HAST C TFE CO
A16071	PLATE - ELECTRO POLISH
A16091	PLATE - SILCONERT
A19307B	PLATE SCREW - 316ss
A19310B	PLATE SCREW - 316ss TFE CO
A19377B	PLATE SCREW - ELECTRO POLISH
A19397B	PLATE SCREW - SILCONERT

ADC-127 07/21/21

Notes:

1. The center round Valox spacer must be flipped 180° to face opposite direction of the two adjacent spacers.
2. Remove base.
3. Refer to WI-10-4 for additional assembly instructions.



AIR DIMENSIONS INC.
DEERFIELD BEACH, FL. USA 33442
WWW.AIRDIMENSIONS.COM

DATE 11/1/2018	TITLE M-Series Elevated Head Div. 2 Pump
APPROVED BY FDM	DWG NO Mxx1-xx-Wx5-L
	MODEL # Mxx1-xx-Wx5-L

07/21 (2124) SHEET 2 OF 2