		AIR DIMENSIONS INC. DEERFIELD BEACH, FL. USA 33442 WWW.AIRDIMENSIONS.COM	
		DATE 7/19/2013	TITLE E-Series ATEX Pump
APPROVED BY FDM	DWG NO E251-FP-Fxx	MODEL # E251-FP-Fxx	SHEET 1 OF 2

06/21 (2187)

Parts List

ITEM	QTY	PART#	DESCRIPTION
1	1	A01645	ADAPTOR PLATE
2	1	A01830	ADAPTOR
3	4	A02038	BOLT-MOTOR
4	1	A02610	BEARING
5	1	A02611	BEARING
6	1	A02802	BASE
7	1	A02805	VALVEBODY
8	1	A03002A	COUNTERWEIGHT
9	1	A03801	CAP
10	1	A05601A-250	ECCENTRIC
11	1	A06606	ACCESS PLUG
12	4	A06801	FOOT
13	1	A08602B	HOUSING
14	1	A13050A	MOTOR
15	4	A14001	CAP NUT
16	1	A16607	COVER PLATE
17	1	A16801	DIAPHRAGM PLATE
18	1	A16810	EXHAUST PORT
19	1	A16811	INTAKE PORT
20	1	A18601	CONROD
21	1	A18602	TOL. RING
22	1	A18603	TOL. RING
23	4	A19007	PLATE SCREW
24	2	A19008	SET SCREW
25	5	A19009A	SCREW
26	4	A19013	SCREW
27	4	A19017A	SCREW
28	4	A19024	SCREW
29	6	A19604	HEAD BOLT
30	4	A19605	HEAD BOLT
31	1	A19635	SHAFT EXT.
32	2	A19654	ROLL PIN
33	1	A19807A	SCREW
34	1	A19820	CONROD SPACER
35	1	*A04811	DIAPHRAGM
36	2	*A07801	GASKET
37	1	*A23801	WASHER

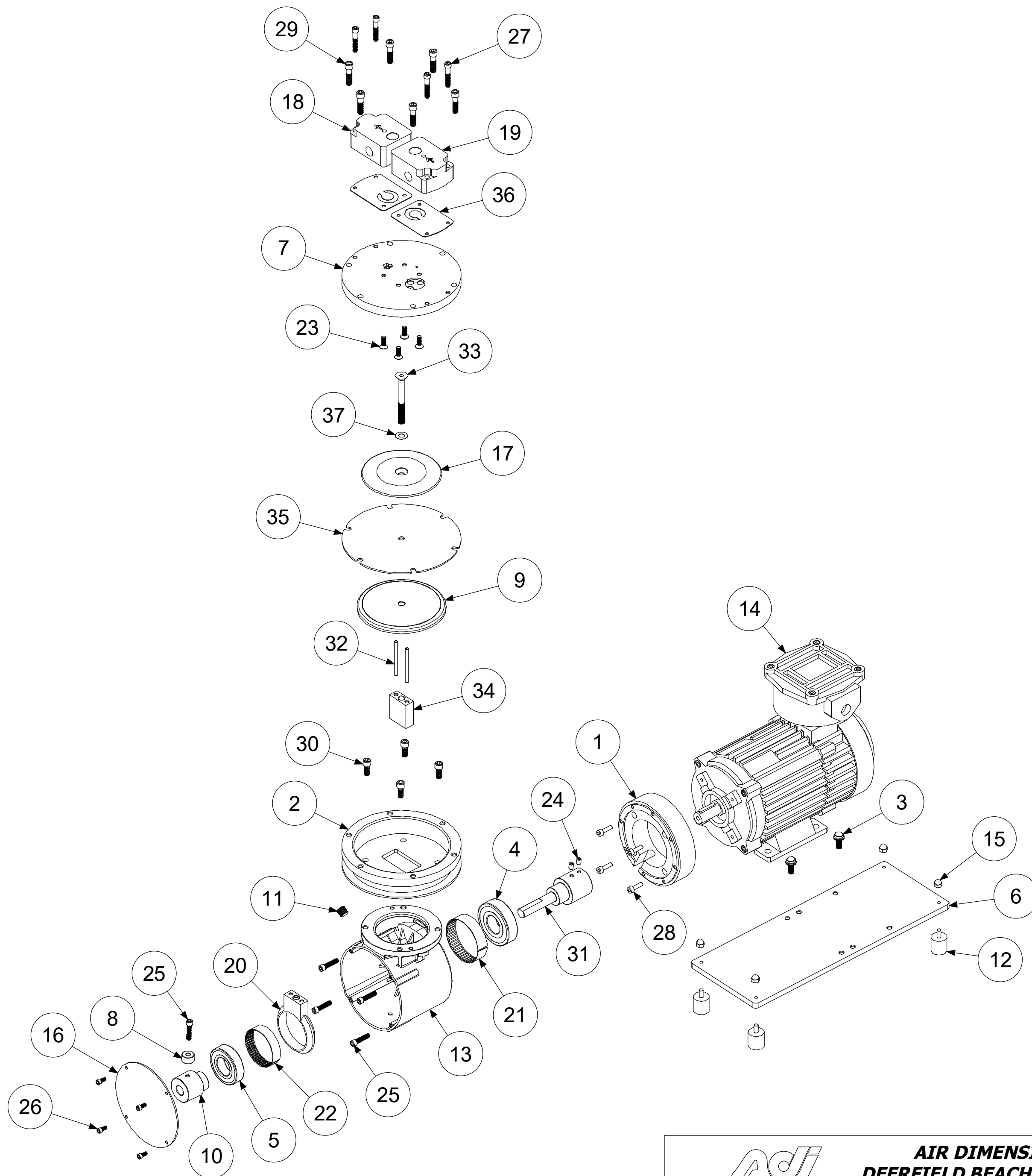
***RECOMMENDED SPARE PARTS KIT**

DIAPHRAGM KIT
11811 3-PLY TEFLON

INCLUDES ITEMS 35-37

ALTERNATE MOTORS:

A13043 .37kW 230/400V 50Hz 3Ph
 A13048A .55kW 115/230V 60Hz 1Ph
 A13050A .37kW 115/230V 50Hz 1Ph



		AIR DIMENSIONS INC. DEERFIELD BEACH, FL. USA 33442 WWW.AIRDIMENSIONS.COM	
DATE	7/19/2013	TITLE	E-Series ATEX Pump
APPROVED BY	FDM	DWG NO	E251-FP-Fxx
		MODEL #	E251-FP-Fxx
06/21 (2187)		SHEET 2 OF 2	