

Parts List

ITEM	QTY	PART #	DESCRIPTION
1	1	A01731	ELEV. SPACER
2	1	A02411	BEARING
3	1	A02705	VALVEBODY, 316ss
4	1	A03701	CAP
5	1	A03706	COVER
6	1	A05401-140	ECCENTRIC
7	1	A06403A	FAN
8	1	A08702	HOUSING
9	1	A08703	HEAD, 316ss
10	1	A13701	MOTOR
11	1	A14401	COUNTERWEIGHT
12	1	A16701	PLATE, 316ss
13	1	A18402	TOLERANCE RING
14	1	A18701	CONROD
15	1	A19013	SCREW
16	2	A19021	SCREW
17	4	A19405B	HEAD BOLT
18	1	A19701	PLATE SCREW, 316ss
19	8	A19718	SCREW
20	1	A19744	SPACER
21	1	A19746	CAP SPACER
22	4	A23402	LOCK WASHER
23	1	*A04711	DIAPHRAGM, TEFLON
24	1	*A07701	GASKET, TEFLON
25	1	*A23461	WASHER
26	1	*A23701	WASHER

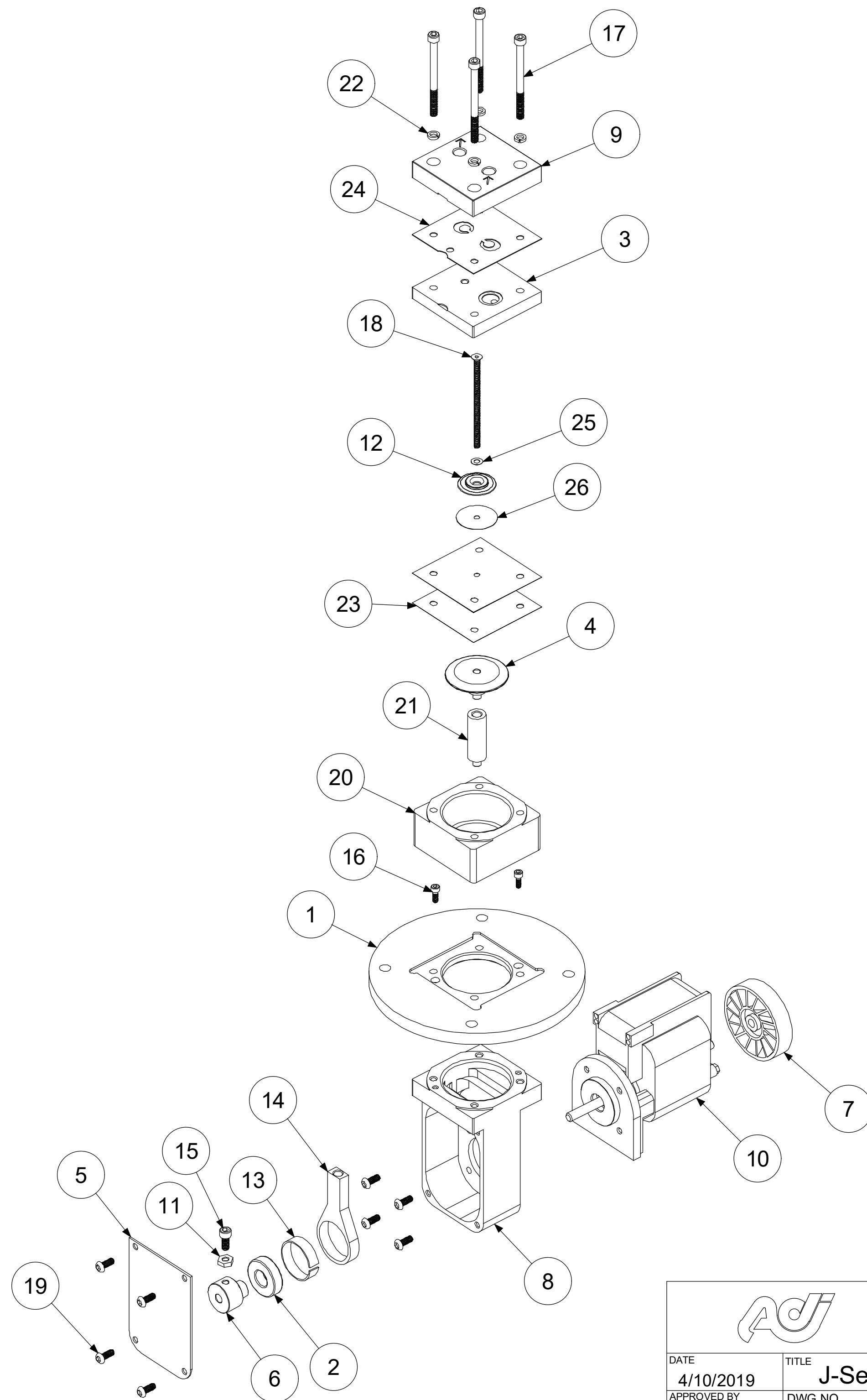
ALTERNATE AND OPTIONAL PARTS	
A02705	VALVEBODY - 316ss
A02706	VALVEBODY - ALUM
A02709	VALVEBODY - 316ss TEF CO
A02710	VALVEBODY - ALUM TEF CO
A02795	VALVEBODY - SILCONERT
A04709	DIAPHRAGM - TEFLON/VITON
A04711	DIAPHRAGM - 2-PLY TEFLON
A07701	GASKET - TEFLON
A07705	GASKET - VITON
A08703	HEAD - 316ss
A08704	HEAD - ALUM
A08707	HEAD - 316ss TEF CO
A08708	HEAD - ALUM TEF CO
A08793	HEAD - SILCONERT
A13701	MOTOR 115V/60Hz
A13704	MOTOR 230V/50/60Hz
A16701	PLATE - 316ss
A16705	PLATE - 316ss TEF CO
A16791	PLATE - SILCONERT
A19701	PLATE SCREW - 316ss
A19702	PLATE SCREW - 316ss TEF CO
A19791	PLATE SCREW - SILCONERT

ADC-159 06/12/20

*RECOMMENDED SPARE PARTS KITS


DIAPHRAGM KITS	
11706	TEFLON/VITON
11711	2-PLY TEFLON

INCLUDES ITEMS 23-26



Note:

1. The maximum eccentric size to be used with this pump is A05401-140. Smaller eccentric sizes are available.



AIR DIMENSIONS INC.
DEERFIELD BEACH, FL. USA 33442
WWW.AIRDIMENSIONS.COM

DATE 4/10/2019	TITLE J-Series Elevated Pump	MODEL # Jxx1-xx-Axx-L	SHEET 2 OF 2
APPROVED BY FDM	DWG NO Jxx1-xx-Axx-L	MODEL # Jxx1-xx-Axx-L	

10/20 (2131)