

** Parts List			
ITEM	QTY	PART #	DESCRIPTION
1	2	A02005	VALVEBODY
2	2	A02311	BEARING
3	2	A02326	HOUSING
4	2	A03301	CAP
5	2	A03302	CWEIGHT
6	1	A03308	COVER
7	1	A03315	CAPACITOR
8	2	A05305	ECCENTRIC
9	1	A06308	FAN, BLUE
10	1	A06309	FAN, WHITE
11	2	A08003	HEAD
12	1	A13314	MOTOR
13	2	A16001	PLATE-DIAPH.
14	2	A18301	CONN. ROD
15	2	A18302	TOL. RING
16	8	A19005	SCREW
17	4	A19013	SCREW
18	2	A19301	PLATE SCREW
19	2	A19309	SCREW
20	8	A19311	SCREW
21	1	A19313	SCREW
22	2	A19321	SCREEN
23	6	A19322	SCREW
24	1	A23402	LOCK WASHER
25	4	*A04004	DISC-VALVE
26	2	*A04301	DIAPHRAGM
27	2	*A07001	GASKET
28	2	*A23001	WASHER

** The "Parts List" includes 316SS wetted parts and the Teflon/EPDM diaphragm. For other options, see the "Alternate and Optional Parts" list.

VOLTAGE	MOTOR	CAPACITOR
115V	A13314 (50/60Hz)	A03315 (10uF)
230V	A13315 (50/60Hz)	A03318 (3uF)

ADC-158 4/22/20

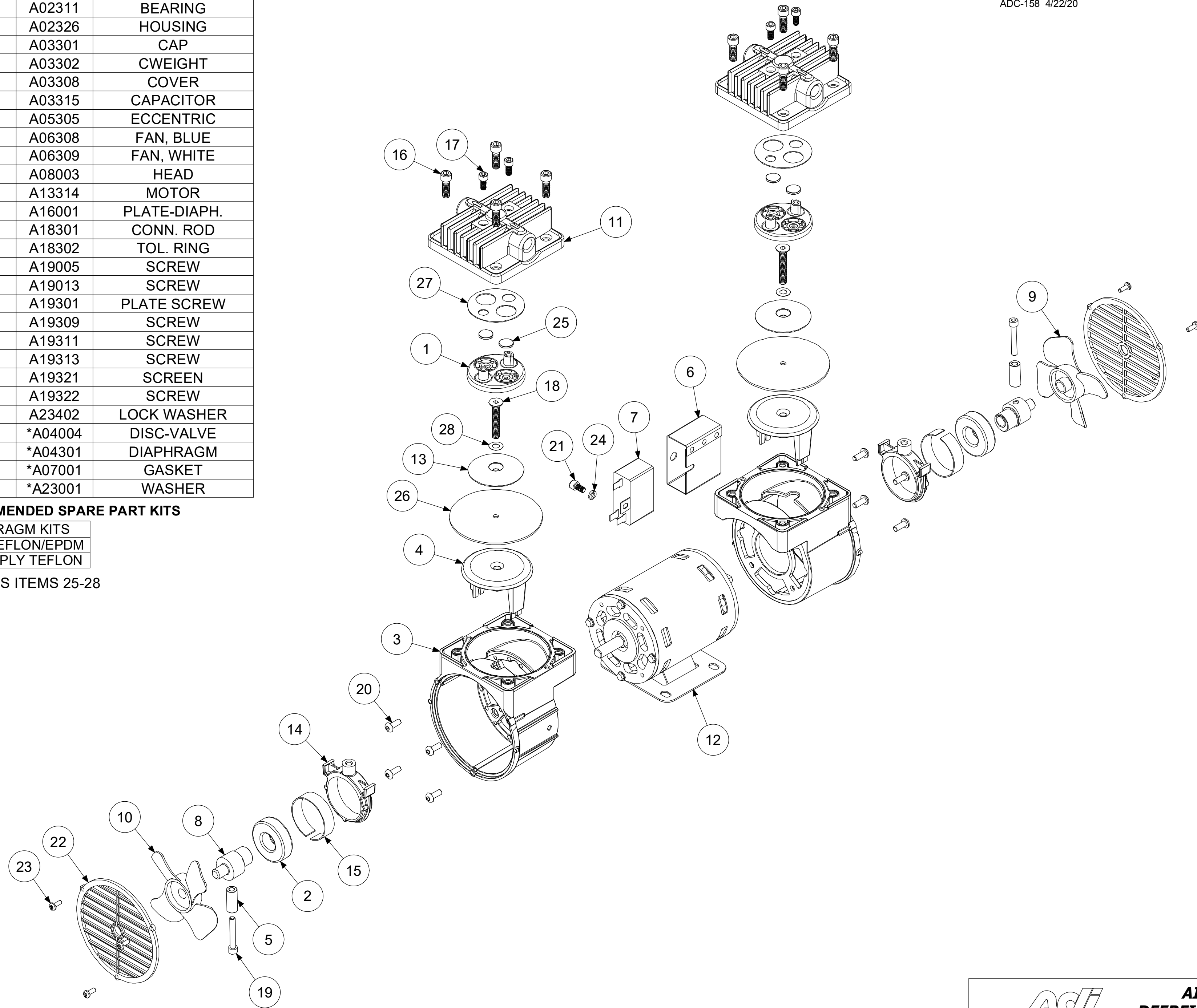
ALTERNATE AND OPTIONAL PARTS	
PART #	DESCRIPTION
A02005	VALVEBODY - 316ss
A02006	VALVEBODY - ALUM
A02009	VALVEBODY - 316ss TFE CO
A02010	VALVEBODY - ALUM TFE CO
A02023	VALVEBODY - HAST C
A02024	VALVEBODY - HAST C TFE CO
A02075	VALVEBODY - ELECTRO POLISH
A02095	VALVEBODY - SILCONERT
A02098	VALVEBODY - DURSAN
A04301	DIAPHRAGM - TEFLON/EPDM
A04311	DIAPHRAGM - 2 PLY TEFLON
A08003	HEAD - 316ss
A08004	HEAD - ALUM
A08007	HEAD - 316ss TFE CO
A08008	HEAD - ALUM TFE CO
A08020	HEAD - HAST C
A08021	HEAD - HAST C TFE CO
A08073	HEAD - ELECTRO POLISH
A08093	HEAD - SILCONERT
A08098	HEAD - DURSAN
A16001	PLATE - 316ss
A16002	PLATE - ALUM
A16005	PLATE - 316ss TFE CO
A16006	PLATE - ALUM TFE CO
A16020	PLATE - HAST C
A16021	PLATE - HAST C TFE CO
A16071	PLATE - ELECTRO POLISH
A16091	PLATE - SILCONERT
A16098	PLATE - DURSAN
A19301	PLATE SCREW - 316ss
A19328	PLATE SCREW - 316ss TFE CO
A19315	PLATE SCREW - HAST C
A19371	PLATE SCREW - ELECTRO POLISH
A19397	PLATE SCREW - SILCONERT
A19398	PLATE SCREW - DURSAN
A07001	GASKET - CARBON TEFLON
A07005	GASKET - VITON
A07906	GASKET - EPDM
A04004	DISC-VALVE - CARBON TEFLON
A04007	DISC-VALVE - 416 SS

ADC-120 02/18/19

***RECOMMENDED SPARE PART KITS**


DIAPHRAGM KITS	
11305	TEFLON/EPDM
11311	2-PLY TEFLON

INCLUDES ITEMS 25-28



Note:

1. Do not use a 2-ply Teflon diaphragm (A04311) with a .160 eccentric (A05304).



AIR DIMENSIONS INC.
DEERFIELD BEACH, FL. USA 33442
WWW.AIRDIMENSIONS.COM

DATE 7/9/2018		TITLE M-Series Double Head Pump	
APPROVED BY FDM	DWG NO Mxx2-xx-Cx5	MODEL # Mxx2-xx-Cx5	SHEET 2 OF 2

03/20 (2116)