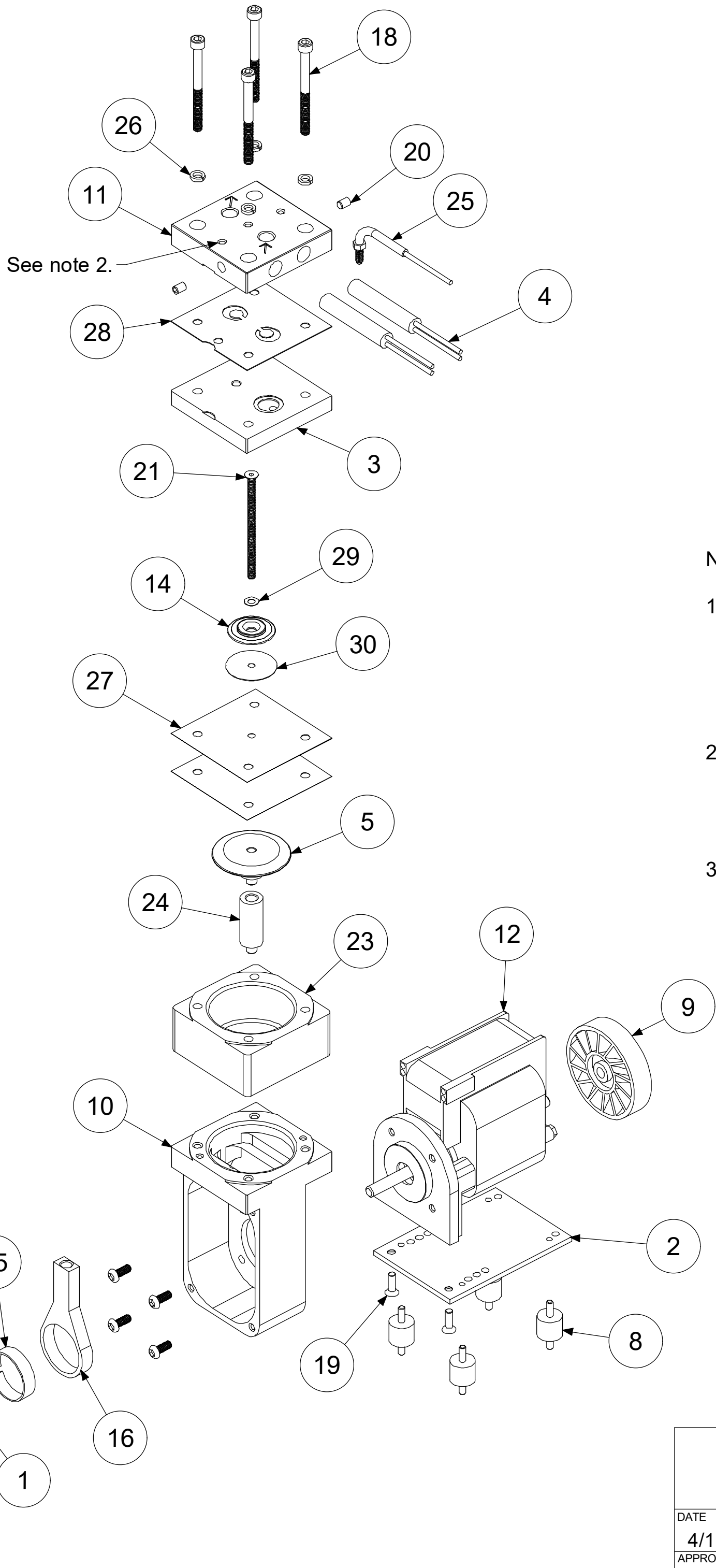


Parts List

| ITEM | QTY | PART# | DESCRIPTION |
|------|-----|------------|--------------------|
| 1 | 1 | A02411 | BEARING |
| 2 | 1 | A02702B | BASE PLATE |
| 3 | 1 | A02705 | VALVEBODY, 316ss |
| 4 | 2 | A03012 | HEATER |
| 5 | 1 | A03701 | CAP |
| 6 | 1 | A03706 | COVER |
| 7 | 1 | A05401-140 | ECCENTRIC |
| 8 | 4 | A06401A | FOOT |
| 9 | 1 | A06403A | FAN |
| 10 | 1 | A08702 | HOUSING |
| 11 | 1 | A08723 | HEAD, 316ss |
| 12 | 1 | A13701 | MOTOR |
| 13 | 1 | A14401 | COUNTERWEIGHT |
| 14 | 1 | A16701 | PLATE, 316ss |
| 15 | 1 | A18402 | TOLERANCE RING |
| 16 | 1 | A18701 | CONROD |
| 17 | 1 | A19013 | SCREW |
| 18 | 4 | A19405A | SCREW |
| 19 | 2 | A19418 | SCREW |
| 20 | 2 | A19428 | SET SCREW |
| 21 | 1 | A19701A | PLATE SCREW, 316ss |
| 22 | 8 | A19718 | SCREW |
| 23 | 1 | A19744 | SPACER |
| 24 | 1 | A19745 | CON ROD SPACER |
| 25 | 1 | A20018 | THERMOCOUPLE |
| 26 | 4 | A23402 | LOCK WASHER |
| 27 | 1 | *A04711 | DIAPHRAGM, TEFLON |
| 28 | 1 | *A07701 | GASKET, TEFLON |
| 29 | 1 | *A23461 | WASHER |
| 30 | 1 | *A23701 | WASHER |

| ALTERNATE AND OPTIONAL PARTS | |
|------------------------------|----------------------------|
| A02705 | VALVEBODY - 316ss |
| A02709 | VALVEBODY - 316ss TEF CO |
| A02795 | VALVEBODY - SILCONERT |
| A03012 | HEATER - 110V 75 WATT |
| A03014 | HEATER - 220V 75 WATT |
| A04709 | DIAPHRAGM - TEFLON/VITON |
| A04711 | DIAPHRAGM - 2-PLY TEFLON |
| A07701 | GASKET - TEFLON |
| A07705 | GASKET - VITON |
| A08723 | HEATED HEAD - 316ss |
| A08727 | HEATED HEAD - 316ss TEF CO |
| A08790 | HEATED HEAD - SILCONERT |
| A13701 | MOTOR 115V/60Hz |
| A13704 | MOTOR 230V/50/60Hz |
| A16701 | PLATE - 316ss |
| A16705 | PLATE - 316ss TEF CO |
| A16791 | PLATE - SILCONERT |
| A19701A | PLATE SCREW - 316ss |
| A19702A | PLATE SCREW - 316ss TEF CO |
| A19791A | PLATE SCREW - SILCONERT |

ADC-128 06/12/20



Notes:

- This pump is equipped with a thermocouple or an RTD. Please refer to the following.

A controller must be used with the thermocouple (A20018) or the RTD (A18003) to prevent overheating.
- The top of the head is provided with three possible installation locations for a thermocouple or an RTD. These are for ease of installing customer provided fittings. Factory preferred installation location is in the top center hole of the head.
- The maximum eccentric size to be used with this pump is A05401-140. Smaller eccentric sizes are available.

*RECOMMENDED SPARE PARTS KITS

| DIAPHRAGM KITS | |
|----------------|--------------|
| 11706 | TEFLON/VITON |
| 11711 | 2-PLY TEFLON |

INCLUDES ITEMS 27-30



AIR DIMENSIONS INC.
DEERFIELD BEACH, FL. USA 33442
WWW.AIRDIMENSIONS.COM

| | | | |
|--------------------|-------------------------------|--------------------------|--------------|
| DATE 4/11/2019 | TITLE J-Series Heated Pump | MODEL # Jxx1-xx-Axx-M | SHEET 2 OF 2 |
| APPROVED BY FDM | DWG NO Jxx1-xx-Axx-M | MODEL # Jxx1-xx-Axx-M | |

10/20 (2131)