

| ALTERNATE PARTS LIST |                          |
|----------------------|--------------------------|
| A04001               | DIAPHRAGM - TEFLON/EPDM  |
| A04003               | DIAPHRAGM - VITON        |
| A04011               | DIAPHRAGM - 3 PLY TEFLON |

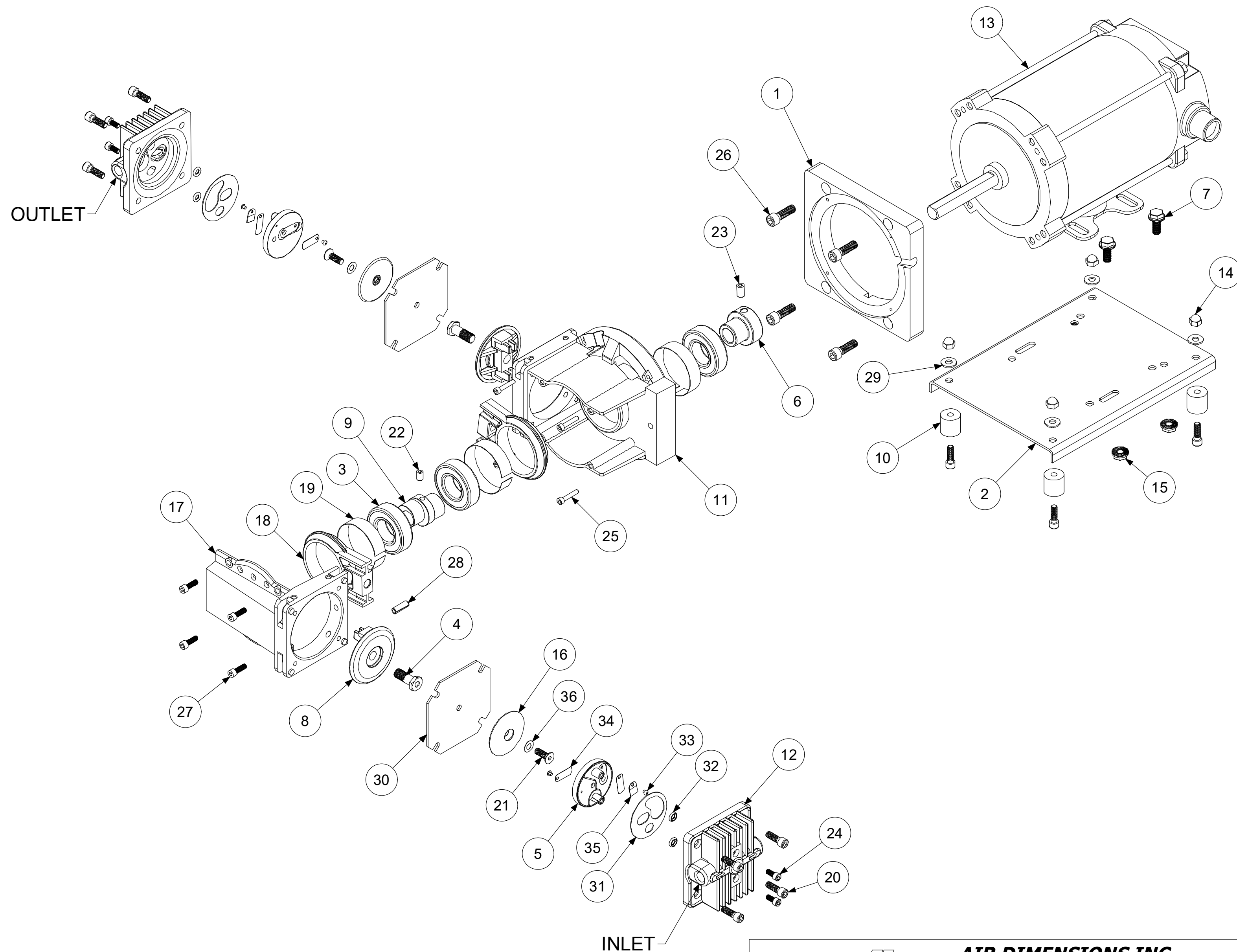
ADC-191 08/04/21

| Parts List |     |            |                 |
|------------|-----|------------|-----------------|
| ITEM       | QTY | PART #     | DESCRIPTION     |
| 1          | 1   | A01001     | ADAPTOR         |
| 2          | 1   | A02002     | BASE            |
| 3          | 3   | A02011     | BEARING         |
| 4          | 2   | A02014     | ROD BOLT        |
| 5          | 2   | A02028     | VALVEBODY       |
| 6          | 1   | A02033     | BUSHING         |
| 7          | 4   | A02038     | BOLT-MOTOR      |
| 8          | 2   | A03001     | CAP             |
| 9          | 1   | A05002-250 | ECCENTRIC       |
| 10         | 4   | A06001     | FOOT            |
| 11         | 1   | A08001     | HOUSING         |
| 12         | 2   | A08040     | HEAD            |
| 13         | 1   | A13022     | MOTOR           |
| 14         | 4   | A14001     | CAP NUT         |
| 15         | 4   | A14009     | NUT             |
| 16         | 2   | A16001     | PLATE-DIAPH.    |
| 17         | 1   | A16008     | 2nd STAGE       |
| 18         | 2   | A18001     | CONN. ROD       |
| 19         | 3   | A18002     | TOLERANCE RING  |
| 20         | 12  | A19005     | SCREW           |
| 21         | 2   | A19007     | PLATE SCREW     |
| 22         | 1   | A19008     | SET SCREW       |
| 23         | 1   | A19010     | SET SCREW       |
| 24         | 4   | A19013     | SCREW           |
| 25         | 4   | A19018     | HOUSING SCREW   |
| 26         | 4   | A19022     | ADPT. SCREW     |
| 27         | 4   | A19031     | 2nd STAGE SCREW |
| 28         | 1   | A19050     | SPRING PIN      |
| 29         | 4   | A23004     | WASHER          |
| 30         | 2   | *A04001    | DIAPHRAGM       |
| 31         | 2   | *A07012    | GASKET          |
| 32         | 4   | *A15003    | O-RING          |
| 33         | 4   | *A22002    | 4-40 SCREW      |
| 34         | 4   | *A22004    | FLAPPER VALVE   |
| 35         | 2   | *A22005    | VALVE STOP      |
| 36         | 2   | *A23001    | WASHER          |

**\*RECOMMENDED SPARE PARTS KITS**

| DIAPHRAGM KITS |              |
|----------------|--------------|
| 11012          | TEFLON/EPDM  |
| 11014          | 3-PLY TEFLON |
| 11017          | VITON        |

INCLUDES ITEMS 30-36



**AIR DIMENSIONS INC.**  
**DEERFIELD BEACH, FL. USA 33442**  
[WWW.AIRDIMENSIONS.COM](http://WWW.AIRDIMENSIONS.COM)

|             |                                |             |  |
|-------------|--------------------------------|-------------|--|
| DATE        | TITLE                          |             |  |
| 7/30/2014   | RVA-Series Double Head XP Pump |             |  |
| APPROVED BY | DWG NO                         | MODEL #     |  |
| FDM         | RVA2-Fx-RC5                    | RVA2-Fx-RC5 |  |

08/21 (2198)

**MOTOR DESCRIPTION:**  
A13022 1/6 HP 115/230V 50/60Hz 1Ph